

## Technical Data Sheet 303

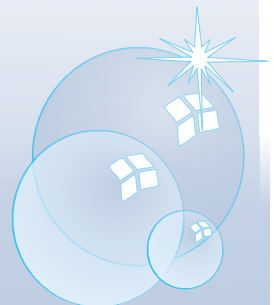
**METAL SHINE**

**18**

**Floor Care**

### Acrylic Floor Finish

**METAL SHINE 18** was designed with you in mind. Resists abrasion in high traffic areas such as schools, retail outlets, office buildings, healthcare facilities, government offices, etc. A durable floor finish for all types of tile and other hard surface floors. Our unique formulation saves you drying time while providing an excellent durable shine. This scuff and scratch resistant formula can cover up to 2500 square feet per gallon depending on the floor conditions and application technique. Experience a beautiful "wet look" with either buffing or high speed burnishing.





## FEATURES AND BENEFITS

**METAL SHINE 18** is a unique proprietary formulation that offers many benefits enumerated below:

**USER FRIENDLY - METAL SHINE 18** is very user friendly due to its free flowing and excellent leveling characteristics. This unique product also provides a dry time of 30 minutes or less under ideal conditions and proper application.

**EXCEPTIONAL GLOSS/DURABILITY - METAL SHINE 18** provides an exceptional gloss and is extremely detergent resistant as well as being highly resistant to abrasion, scuffing, heel marking, scratching and powdering, even under the heaviest traffic.

**SAFETY - METAL SHINE 18** meets or exceeds Slip Resistance Standards, (when properly maintained), established by CSPA and UL as tested in accordance with ASTM D2047.

**EXTREMELY VERSATILE - METAL SHINE 18's** durable, high gloss formula resists abrasion in high traffic areas such as schools, retail outlets, office buildings, healthcare facilities, government offices, etc. In addition it has been formulated for use on all types of flooring, including rubber, asbestos tile, vinyl, vinyl asbestos and other types of composition tile, cork, unglazed ceramic tile, concrete, and terrazzo.

## PROPERTIES

<b>State:</b>	Free flowing liquid
<b>Color/ Form:</b>	White
<b>Scent:</b>	N/D
<b>Solubility:(In water)</b>	Complete (100%)
<b>pH:</b>	8.2 - 8.5
<b>Shelf Life:</b>	2 years (Normal indoor condition)
<b>Hazard Rating:</b>	HMIS

HEALTH	1
FLAMMABILITY	0
REACTIVITY	0
PROTECTIVE EQUIPMENT	B

4= Very High; 3= High; 2=Moderate; 1=Slight; 0=Insignificant

## APPLICATION

### INITIAL APPLICATION

- Make sure that all finish has been completely removed for the floor's surface. We recommend one of Abernathy's products (Strip or Ambush)
- Test the floor to insure that any and all residue has been neutralized and removed.
- Apply 4 to 6 thin uniform coats of product with an applicator. (we recommend a relentless mop or CPI microfiber pad)
- Allow plenty of dry time depending on conditions. While **METAL SHINE 18** normally dries in 30 minutes or less, a longer period may be required depending on conditions and application.
- Burnish or buff floor on a routine basis depending on traffic. (we recommend high speed burnishing when possible. Contact us for the recommended pad selection.

Please make sure to read and understand the product label and Safety Data Sheet and follow all directions, precautionary and first aid statements on product label. Safety Data Sheets (SDS) are available from an authorized Abernathy distributor.

## PACKAGING

303004	4-gallon case
303005	5-gallon pail
303030	30-gallon drum
303055	55-gallon drum

**For Institutional and Industrial Use Only**